

What is FTTP?

Fibre to the Premises (FTTP) is the new full fibre Internet solution that connects your premise directly to the nearest Ethernet node. This means your business can benefit from speeds up to 1Gb, with fast installation, market-leading SLAs and a much more reliable connection.

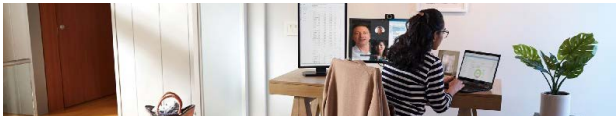
Why FTTP?

FTTP lets your business take advantage of ultrafast network speeds at a lower cost and is the perfect platform for moving off the PSTN network before Openreach switches it off by 2025. It's also easy to overlay additional IP services like VoIP and SIP on your FTTP, providing a stable platform to run your voice services over.

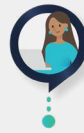
FTTP is also an uncontended option, making it ideal for businesses that need to quickly access applications in the cloud, download and send large files and connect to other sites across the country.

Why Choose Wavenet as your FTTP Provider?

As an ISP, we have over two decades of experience in networking and connectivity for businesses, with more than 100 highly trained and UK-based engineers and long-standing partnerships with all the tier one connectivity suppliers. We are passionate about providing your business the very best solution that meets and often exceeds your needs and work with you to understand your business before suggesting the right solution.



FTTP Benefits



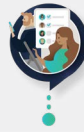
► Ultra fast speeds

FTTP boosts what's possible through fibre, with speeds of up to 1Gb, combined with ultra-low latency that isn't affected by the distance between your premise and the exchange.



► Future-proof your business

The 2025 switch off is getting closer with some exchanges switched off already, prepare your business by moving to the connectivity of the future that is designed to meet our ever-growing bandwidth demands.



► Flexible and scalable

There are multiple options to choose from when considering FTTP, meaning you can easily and quickly scale your bandwidth to meet the growth of your business.

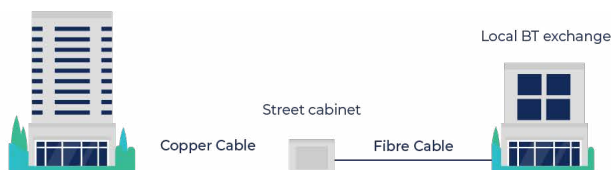


► Faster installation

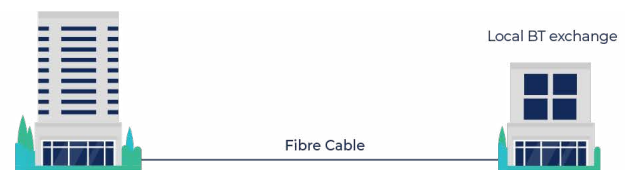
We aim to get you up and running on FTTP within 10 days, allowing you to take advantage of the faster, more reliable connectivity quicker than ever before.

How does FTTP compare to FTTC?

Fibre to the Cabinet (FTTC) delivers Fibre from the cabinet to the nearest Ethernet exchange. It offers speeds of up to 80MB downstream.



Fibre to the Premises (FTTP) delivers Fibre directly to the premises from the nearest Ethernet node with speeds of up to 1GB downstream.



FTTP FAQs

► Why was FTTP created?

FTTP has been created to replace the UK's aging fibre infrastructure, where we've been limited to speeds of 80 Mbps, FTTP enables us to provide more reliable, ultrafast fibre at up to 1 Gbps.

► What is the difference between FTTP and SoGEA?

FTTP is new, full fibre connectivity from the exchange to the premises and offers speeds of up to 1 Gbps with ultra-low latency. SoGEA is simply a replacement for PSTN-based broadband that offers speeds up to 80 Mbps.

► How does FTTP impact my telephony?

FTTP can help your business move to a hosted or cloud telephony service and ensure that you have moved off the traditional telephone network (PSTN) before the switch off in 2025.

► Can DDoS Attack Prevention be added to FTTP?

Yes it can, our DDoS Attack Protection is the most advanced in the world and works 24/7 to keep your business safe from any denial of service attacks no matter where in the world they originate.